



Warrell

www.warrellrichards.com

Trade Side Lockers
& Accessories



ABOUT US

Manufactured In the UK

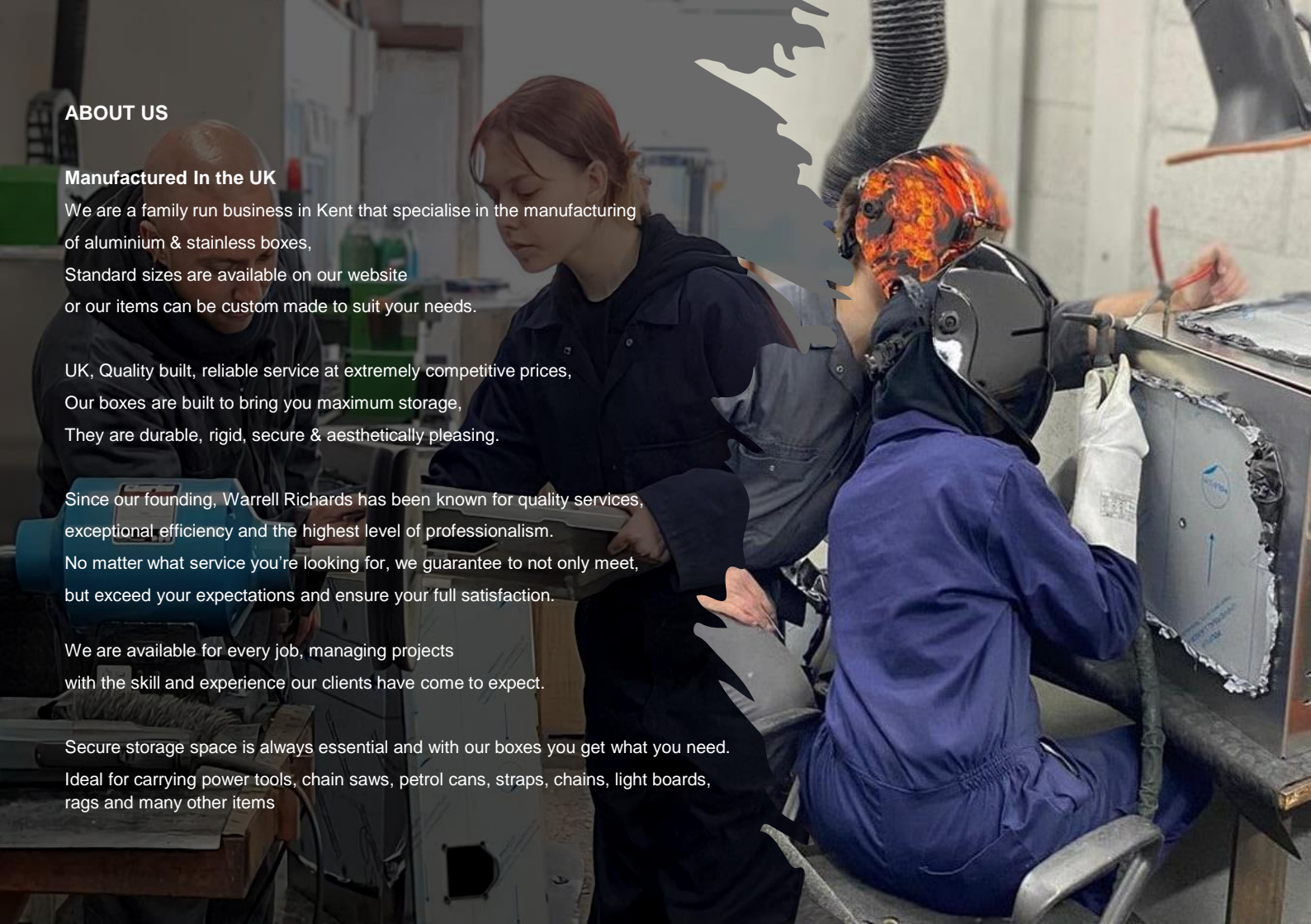
We are a family run business in Kent that specialise in the manufacturing of aluminium & stainless boxes. Standard sizes are available on our website or our items can be custom made to suit your needs.

UK, Quality built, reliable service at extremely competitive prices, Our boxes are built to bring you maximum storage, They are durable, rigid, secure & aesthetically pleasing.

Since our founding, Warrell Richards has been known for quality services, exceptional efficiency and the highest level of professionalism. No matter what service you're looking for, we guarantee to not only meet, but exceed your expectations and ensure your full satisfaction.

We are available for every job, managing projects with the skill and experience our clients have come to expect.

Secure storage space is always essential and with our boxes you get what you need. Ideal for carrying power tools, chain saws, petrol cans, straps, chains, light boards, rags and many other items



GET IN TOUCH

Questions, enquiries or would like a quote?

Feel free to contact us,

by email or by phone and we will respond as quickly as possible,

we'd love to hear from you.

Phone

Dartford office: 01474 526221

Email

sales@warrellrichards.com

accounts@warrellrichards.com

workshop@warrellrichards.com

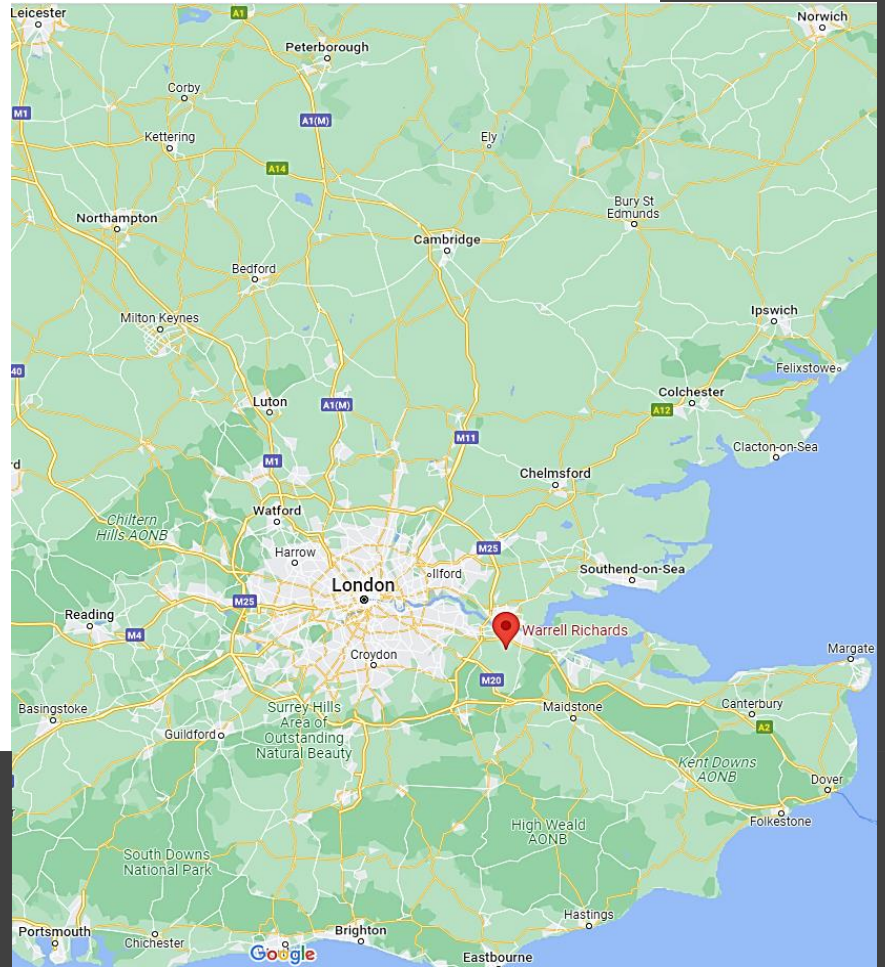
Website

www.warrellrichards.com

Visitors by appointment only

Warrell Richards Ltd
Hook Green Farm
Southfleet
Dartford, Kent
UK
DA13 9ND

Find us on



Sustainability

At Warrell Richards, we are passionate about reducing our carbon footprint, this is one reason we choose to design and build metal toolboxes over the plastic alternative.

Metal is a material that is endlessly recyclable –

for example, Aluminium drinks cans can be on sale as another can in just 60 days,

It's crucial we each play our own part in making sustainable choices and recycle our waste metal.

How does plastic harm the environment?

Plastic stays around an extremely long time, threatening wildlife and spreading toxins, Plastic also contributes to global warming.

Almost all plastics are made from chemicals that come from the production of planet-warming fuels (gas, oil and even coal).

Our reliance on plastic prolongs our demand for these dirty fuels, Burning plastics in incinerators also releases climate-wrecking gases and toxic air pollution



To further our carbon footprint, we only use reclaimed / repurposed pallets.

Our used pallets come from the recycling sector and the circular economy.

used pallets are repaired by replacing broken parts with either new or reusable parts.

Used pallets that no longer meet the quality requirements are crushed and follow the energy recycling process.

We use FSC approved Enviro cardboard boxes to package your items – protecting your goods & the planet - **Why use FSC certified cardboard?**

Carbon benefits - Trees absorb CO₂ as they grow

Every cubic meter of wood used as substitute for other materials displaces an average of 1.1 tons CO₂.

If this is added to the 0.9 tons of CO₂ stored, then each cubic meter of wood can save a total of 2 tons of CO₂



Ready for the future

More and more European municipalities are announcing that in the future, inner-city areas will only be accessible to zero-emission vehicles — making fully electric trucks an important proposition.

Fully electric solutions also offer the transport sector an opportunity to play its part in helping to meet the challenges of global warming and local air quality.

Suitable lockers for your future ready vehicle

All of our products are made from sustainable materials.

Our Plain aluminium and aluminium chequer plate products are extremely lightweight, No need to compromise on quality for a lightweight storage solution.

We say no to plastic.

Our materials are 100% recyclable

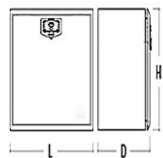
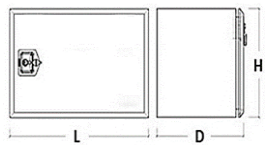
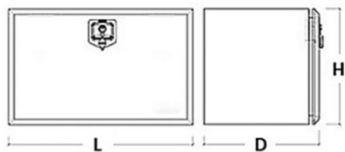
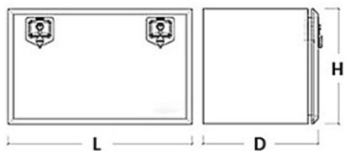
Reduced CO2 footprint –

When using green energy & sustainable products you benefit from reducing your transport operations' CO2 footprint, as well as helping you achieve your sustainability goals.

In addition, electric powertrains are very quiet, which is ideal for evening or night-time deliveries.



Measurements



L X H X D

Length – From one side to the other

Height – From the top to the bottom

Depth – From the front to the back

All of our measurements are in millimetres

Notes

55mm Lip / Double fold the around the aperture of the locker, with rubber seal attached

Increases strength and durability

Decreases aperture by 110mm total in length and height but still having the ability to use the space inside

This also acts as a rain soakaway drainage system



The door makes up 60mm of the measurement

(Included in the total measurement)

Still able to use the 60mm of space behind the door

When open the door overhang requires 30mm of clearance

Need the door to sit flat?

If for any reason you need your doors to open level, Simply discuss this with the sales team prior to purchase

Aluminium Chequerplate / Treadplate / 5 Bar

The benefits of this versatile material are numerous, including:

Slip resistant – Raised pattern provides traction on steps, ramps, ladders, floors, tailgates, running boards, catwalks, loading docks, etc....

Corrosion resistant – Made of corrosion resistant metals, provides years of service even under the toughest conditions, including marine locations

Hygienic – Easy to wash down and is able to resist damage from strong, corrosive cleaning agents.

Protective – Prevents damage to walls, doors, corners, skids etc... Also protects bumpers, treads, truck beds, tailgates, bodies of commercial, off road, and other vehicles

Lightweight material

Decorative - Having a heavily raised 5-bar pattern, Its both functional and decorative and is commonly used in vehicle construction.

Can be painted / powder coated or left in its natural state

Plain Aluminium – 5251 Grade

Medium strength

High corrosion resistance particularly in marine environments

Lightweight material

Can be painted / powder coated or left in its natural state

5251 is typically used in: Boats, Paneling and pressings, Marine structures, Aircraft parts, Vehicle panels, Furniture tubing, Silos and Containers



Stainless

304 Grade – High grade

High strength

Excellent corrosion resistance

Durable

Hygiene - The hard metallic surface makes it difficult for bacteria to adhere and survive. Its easy clean ability makes it the first choice for strict hygiene conditions.

Recyclable - Stainless steel is 100% recyclable. In fact, 50% of new stainless steel comes from old remelted stainless steel scrap, thereby completing the full life cycle.

Longevity - When the total life cycle costs are considered, stainless is often the least expensive material option.

Mirrored Stainless

Mirror finish has been finely polished into a mirror,

unlike the bright annealed mirror finish that has been acid dipped leaving a murky mirror effect) – Beautiful finish

Most commonly used to make mirrors and reflective items

Polished Stainless

Has a satin like finish, The most commonly used stainless for the austenitic look and finish

Circled Stainless

Also known as flowered stainless, Easy to maintain, reflective surface, highly decorative and eye-catching finish



Concealed pivot hinge - Lift off

Material

Hinge & pin: steel, white zinc plated

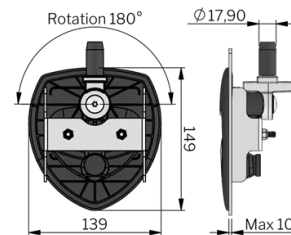
Size

60.0 x 39.0 x 24.5

Feature

Simply slide the pins out from inside the hinge and you can completely remove the door,
Great for ease of use, installation and cleaning

SKU
CPHLO



Vector T2 Locks

Can be used as a direct replacement for T-Locks

Can be turned 180° left and right

Installation is swift and easy with a mounting bracket

IP65 Dust and water protected

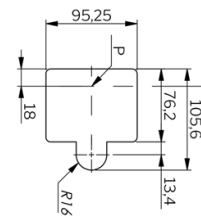
Zinc die cast - black powder coated

stainless-steel dust shutter

Supplied keys: 2 - Keyed alike

Standards IP65DIN EN 61373

SKU
V2THL



Horizontal fitting kits

2 sizes available / 2 materials available

250 x 300 - For use with lockers with a depth equal to 300mm - 300 x 400 - For use with lockers with a depth equal to 400mm

Come complete with washers, bolts & elongated holes for ease of use

Steel

horizontal fitting kit

Powder coated

to protect against the elements

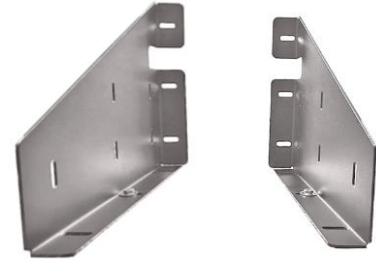


Aluminium

horizontal fitting kit

Lightweight

Sustainable



Adjustable brackets

These fully adjustable brackets make it easy to fit any locker without compromising on strength.

Designed for ease of fitting / use

Heavy duty

Powder coated to protect against the elements



SKU	DESCRIPTION	SIZE
AHFK250300	Horizontal Fitting Kit – Aluminium	250 x 300
AHFK300400	Horizontal Fitting Kit - Aluminium	300 x 400
MSADJBRCM	Rear Cab Module Adjustable	Adjustable
MSADJ700750	Adjustable Brackets - Steel	D750 x H400/650
MSHFK250300	Horizontal Fitting Kit with washers - Steel	250 x 300
MSHFK300400	Horizontal Fitting Kit with washers – Steel	300 x 400

NEW PRODUCTS!!
Adjustable rear cab module frame
& Adjustable Catwalk frame
Interested?
Simply enquire about this product
with a member of the team

Rear Cab Modules

Aluminium - 5251 grade

Struts in the middle top locker to hold the door open

Struts in the middle bottom locker to hold the door open flat, this allows the surface to be used when open

10 Vector T2 handle locks with keys

concealed hinges, Lightweight, weatherproof

This module comes complete or in 6 individual parts that are extremely easy to assemble using the pre drilled elongated holes in each of the individual lockers

SKU	SIZE	LOCKS
ARCMG19001600400	L1900 X H1600 X D400	10



Rear Cab Modules

Aluminium chequerplate - 2mm at base / 3.5mm to bars

Complete module with Suzie connection frame

Powder coated to protect against the elements

6 Vector T2 handle locks with keys

concealed hinges, Lightweight, weatherproof

SKU	SIZE	LOCKS
CVRCM15001000300	L1500 X H1000 X D300	6

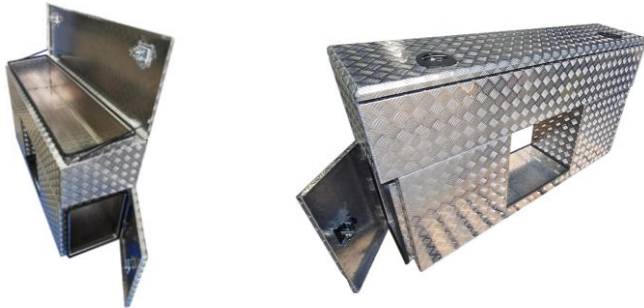
Aluminium chequerplate - 2mm at base / 3.5mm to bars

4 Vector T2 handle locks with keys

Gas struts on the top locker to hold it open while in use

concealed hinges, Lightweight, weatherproof

SKU	SIZE	LOCKS
CRCMG19001000400	L1800 X H1000 X D400	4





Rear Cab Modules

1.5mm Polished stainless finish body with superbright mirrored stainless door, 304 Grade

This material is not to be mistaken for the bright annealed mirror finish,

Our mirror finish has been fully polished to reflect images as clear as a bathroom mirror would do.

Vector T2 handle locks with keys, Concealed hinges, Durable, Strong, Recyclable, Weatherproof

Complete module with suzie connection frame

Gas struts in the top three lockers that open upwards to hold them open when in use

The two bottom side lockers open inwards (towards the suzie frame)

The bottom middle and top middle lockers open down

The suzie frame holes are mounted at the top with blanking plate underneath

but these can be easily changed around by the buyer.

SKU	SIZE	LOCKS
MRCMG15001500300	L1500X H1500 X D300	9





Polished Stainless Steel Lockers

1.5mm Polished finish

304 Grade

Vector T2 handle locks with keys

Concealed hinges

Chains to hold the door open flat, this allows the surface to be used when open and stops the door from hitting the ground

Durable, Strong, Recyclable, Weatherproof

Made in the UK



SKU	SIZE	LOCKS
PQ400300300	L400 X H300 X D300	1
PQ400400400	L400 X H400 X D400	1
PQ500350400	L500 X H350 X D400	1
PQ500500500	L500 X H500 X D500	1
PQ5001200350	L500 X H1200 X D350	2
PQ600400500	L600 X H400 X D500	1
PQ600400400	L600 X H400 X D400	1
PQ600600600	L600 X H600 X D600	1
PQ800400350	L800 X H400 X D350	2
PQ800400400	L800 X H400 X D400	2
PQ800500500	L800 X H500 X D500	2
PQ800300500	L800 X H300 X D500	2
PQ1000400400	L1000 X H400 X D400	2
PQ1000500500	L1000 X H500 X D500	2
PQ1000300500	L1000 X H300 X D500	2
PQ1200400400	L1200 X H400 X D400	2
PQ1200500500	L1200 X H500 X D500	2
PQ1400300350	L1400 x H300 x D350	2
PQ1400400400	L1400 x H400 x D400	2
PQ1400500500	L1400 x H500 x D500	2





Mirrored Stainless Steel Lockers

1.5mm Polished stainless finish body with superbright mirrored stainless door,
 This material is not to be mistaken for the bright annealed mirror finish,
 Our mirror finish has been fully polished to reflect images as clear as a bathroom
 mirror would do. .

304 Grade

Vector T2 handle locks with keys, Concealed hinges

Chains to hold the door open flat, this allows the surface to be used when open
 and stops the door from hitting the ground

Durable, Strong, Recyclable, Weatherproof

Made in the UK



SKU	SIZE	LOCKS
MQ400300300	L400 X H300 X D300	1
MQ400400400	L400 X H400 X D400	1
MQ500350400	L500 X H350 X D400	1
MQ500500500	L500 X H500 X D500	1
MQ5001200350	L500 X H1200 X D350	1
MQ600400500	L600 X H400 X D500	1
MQ600400400	L600 X H400 X D400	1
MQ600600600	L600 X H600 X D600	1
MQ800400350	L800 X H400 X D350	1
MQ800400400	L800 X H400 X D400	1
MQ800500500	L800 X H500 X D500	1
MQ800300500	L800 X H300 X D500	1
MQ1000400400	L1000 X H400 X D400	2
MQ1000500500	L1000 X H500 X D500	2
MQ1000300500	L1000 X H300 X D500	2
MQ1200400400	L1200 X H400 X D400	2
MQ1200500500	L1200 X H500 X D500	2
MQ1400300350	L1400 x H300 x D350	2
MQ1400400400	L1400 x H400 x D400	2
MQ1400500500	L1400 x H500 x D500	2



Catwalk Lockers

These lockers are extremely universal

They come in handy for many areas on a wide variety of vehicles

Including...

Truck catwalks, Rear cabs, overlander roofs and trailer tongues

Aluminium Chequerplate

2mm at base / 3.5mm to bars

Vector T2 handle locks with keys

Door is on top for easy access to the locker contents

Can be left in its natural state or powder coated to protect against the elements

Concealed hinges

Lightweight

Weatherproof



SKU	SIZE	LOCKS
C840290260330	L840 X H290/260 X D330	1
CV840290260330	L840 X H290/260 X D330 (Powder coated version)	1
C800290100500	L800 X H280/100 X D500	1
CV800280100500	L800 X H280/100 X D500 (Powder coated version)	1

Aluminium Chequerplate Lockers

2mm at base / 3.5mm to bars

Vector T2 handle locks with keys

Powder coated to help protect against the elements

Concealed hinges

Chains to hold the door open flat, this allows the surface to be used when open and stops the door from hitting the ground

Lightweight, Recyclable , Weatherproof

Made in the UK



SKU	SIZE	LOCKS
CVQ400300300	L400 x H300 x D300	1
CVQ400400400	L400 x H400 x D400	1
CVQ500350400	L500 x H350 x D400	1
CVQ500500500	L500 x H500 x D500	1
CVQ600400400	L600 x H400 x D400	1
CVQ600400450	L600 x H400 x D450	1
CVQ600400500	L600 x H400 x D500	1
CVQ600250250	L600 X H250 X D250	1
CVQ800300500	L800 x H300 x D500	1
CVQ800400350	L800 x H400 x D350	1
CVQ800400400	L800 x H400 x D400	1
CVQ800500500	L800 x H500 x D500	1
CVQ1000300350	L1000 X H300 X D350	2
CVQ1000300500	L1000 x H300 x D500	2
CVQ1000400400	L1000 x H400 x D400	2
CVQ1000500500	L1000 x H500 x D500	2
CVQ1000500600	L1000 x H600 x D500	2
CVQ1200250250	L1200 X H250 X D250	2
CVQ1200200350	L1200 x H300 x D350	2
CVQ1200400400	L1200 x H400 x D400	2
CVQ1200500500	L1200 x H500 x D500	2
CVQ1400300350	L1400 x H300 x D350	2
CVQ1400400400	L1400 x H400 x D400	2
CVQ1400500500	L1400 x H500 x D500	2





Aluminium Chequerplate Lockers

2mm at base / 3.5mm to bars

Vector T2 handle locks with keys

Concealed hinges

Chains to hold the door open flat, this allows the surface to be used when open and stops the door from hitting the ground

Lightweight, Recyclable

Weatherproof

Made in the UK



SKU	SIZE	LOCKS
CQ400300300	L400 x H300 x D300	1
CQ400400400	L400 x H400 x D400	1
CQ500350400	L500 x H350 x D400	1
CQ500500500	L500 x H500 x D500	1
CQ600400400	L600 x H400 x D400	1
CQ600400450	L600 x H400 x D450	1
CQ600400500	L600 x H400 x D500	1
CQ600600600	L600 x H600 x D600	1
CQ600250250	L600 X H250 X D250	1
CQ800300500	L800 x H300 x D500	1
CQ800400350	L800 x H400 x D350	1
CQ800400400	L800 x H400 x D400	1
CQ800500500	L800 x H500 x D500	1
CQ1000300350	L1000 X H300 X D350	2
CQ1000300500	L1000 x H300 x D500	2
CQ1000400400	L1000 x H400 x D400	2
CQ1000500500	L1000 x H500 x D500	2
CQ1000600500	L1000 x H600 x D500	2
CQ1200250250	L1200 X H250 X D250	2
CQ1200300350	L1200 x H300 x D350	2
CQ1200400400	L1200 x H400 x D400	2
CQ1200500500	L1200 x H500 x D500	2
CQ1400300350	L1400 x H300 x D350	2
CQ1400400400	L1400 x H400 x D400	2
CQ1400500500	L1400 x H500 x D500	2



Aluminium Lockers

Aluminium - 5251 grade

Vector T2 handle locks with keys

Concealed hinges

Chains to hold the door open flat, this allows the surface to be used when open and stops the door from hitting the ground

Lightweight, Recyclable, Weatherproof

Made in the UK

SKU	SIZE	LOCKS
AQ400300300	L400 x H300 x D300	1
AQ400400400	L400 x H400 x D400	1
AQ500350400	L500 x H350 x D400	1
AQ500500500	L500 x H500 x D500	1
AQ600400400	L600 x H400 x D400	1
AQ600400450	L600 x H400 x D450	1
AQ600400500	L600 x H400 x D500	1
AQ600600600	L600 x H600 x D600	1
AQ650250250	L650 x H250 x D250	1
AQ800300500	L800 x H300 x D500	1
AQ800400350	L800 x H400 x D350	1
AQ800400400	L800 x H400 x D400	1
AQ800500500	L800 x H500 x D500	1
AQ1000300350	L1000 X H300 X D350	2
AQ1000300500	L1000 x H300 x D500	2
AQ1000400400	L1000 x H400 x D400	2
AQ1000500500	L1000 x H500 x D500	2
AQ1000600500	L1000 x H600 x D500	2
AQ1200250250	L1200 X H250 X D250	2
AQ1200300350	L1200 x H300 x D350	2
AQ1200400400	L1200 x H400 x D400	2
AQ1200500500	L1200 x H500 x D500	2
AQ1400300350	L1400 x H300 x D350	2
AQ1400400400	L1400 x H400 x D400	2
AQ1400500500	L1400 x H500 x D500	2

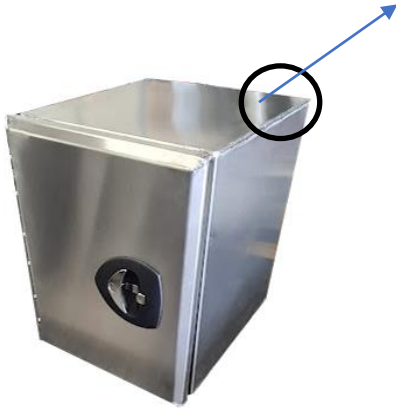




Gap Fillers

Fixed Shelf, Door opens to the side, 1 Vector T2 handle lock with keys, Concealed hinges, Weatherproof

Options: No chequer plate top, Extended chequer plate top to meet the catwalk, Standard chequer top



Aluminium - 5251 grade



Polished stainless – 304 grade



Polished stainless with mirrored stainless door – 304 grade

SKU	DESCRIPTION	SIZE
AFS395500500 (#CT) (#ECT)	Aluminium	L395 X H500 X D500
AFS395650500 (#CT) (#ECT)	Aluminium	L395 X H650 X D500
AFS550600600 (#CT) (#ECT)	Aluminium	L550 X H600 X D600
AFS600600600 (#CT) (#ECT)	Aluminium	L600 X H600 X D600
PFS395500500 (#CT) (#ECT)	Polished stainless	L395 X H500 X D500
PFS395650500 (#CT) (#ECT)	Polished stainless	L395 X H650 X D500
PFS550600600 (#CT) (#ECT)	Polished stainless	L550 X H600 X D600
PFS600600600 (#CT) (#ECT)	Polished stainless	L600 X H600 X D600
MFS395500500 (#CT) (#ECT)	Polihed stainless with mirrored stainless door	L395 X H500 X D500
MFS550600600 (#CT) (#ECT)	Polished stainless with mirrored door	L550 X H600 X D600
MFS395650500 (#CT) (#ECT)	Polihed stainless with mirrored stainless door	L395 X H650 X D500
MFS600600600 (#CT) (#ECT)	Polihed stainless with mirrored stainless door	L600 X H600 X D600

SKU = Standard verion with no chequer

#CT = Chequer top version

#ECT = Extended chequer top version

Trays & Universal Lockers

2mm at base / 3.5mm to bars, Lightweight, Recyclable, Made in the UK

These trays have been built to create an easy workable solution for storing your outside items away tidily.

The holes in the bottom of the tray to let water escape

The holes in sides of the tray allow you to either strap a cover over the top of the tray or strap items down inside the tray to secure them

This tray comes in a variety of sizes so will fit most areas, They also fit perfectly on top of our lockers



SKU	SIZE
CT395140440	L395 X H140 X D440
CT600140440	L600 X H140 X D440
CT800140440	L800 X H140 X D440
CT1000140440	L1000 X H140 X D440
CT1200140440	L1200 X H140 X D440
CT1400140440	L1400 X H140 X D440

2mm at base / 3.5mm to bars

Vector T2 handle locks with keys

Concealed hinges, Lightweight, Recyclable, Weatherproof, Made in the UK
Door is on top for easy access to the locker contents

These lockers are extremely universal

They come in handy for many areas on a wide variety of vehicles

Including...

Truck catwalks, overlander roofs, Truck beds, trailer side walls and much more...



SKU	SIZE
C650120900	L650 X H120 X D900
C800220500	L800 X H220 X D500
C1000160500	L1000 X H160 X D500
C1060120480	L1060 X H120 X D480

Trays

The perfect accessory for any vehicle, workshop, yard or garage

Available in a wide variety of sizes

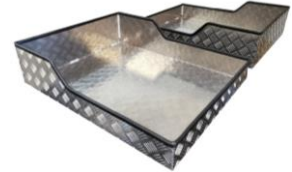
Aluminium Chequerplate

2mm at base / 3.5mm to bars

Rubber seal around the top edges

Lightweight

Manufactured in the UK



SKU	SIZE
CT40050300	L400 x H50 x D300
CT500100500	L500 x H100 x D500
CT600100475	L600 X H100 X D475
CT650100900	L650 X H100 X D900
CT700180300	L700 X H180 X D300
CT800100300	L800 X H100 X D300
CT800180475	L800 X H180 X D475
CT800180700	L800 X H180 X D700
CT900100300	L900 X H100 X D300
CT1300100100	L1300 X H100 X D100
CT1000100500	L1000 X H100 X D500
CT10001001000	L1000 X H100 X D1000
CT1200100300	L1200 X H100 X D300
CT1200100475	L1200 X H100 X D475
CT1400100300	L1400 X H100 X D300
CT1400100475	L1400 X H100 X D475
CT1500100300	L1500 X H100 X D300
CT1500100475	L1500 X H100 X D475
CT1600100300	L1600 X H100 X D300
CT1600100475	L1600 X H100 X D475
CT1800100300	L1800 X H100 X D300
CT1800100475	L1800 X H100 X D475
CT2000100300	L2000 X H100 X D300
CT2000100475	L2000 X H100 X D475

SKU	SIZE
CTS400180100300	L400 X H180/100 X D300
CTS500180100300	L500 X H180/100 X D300
CTS500180100475	L500 X H180/100 X D475
CTS600180100750250	L600 X H180/100 X D750/250
CTS800180100300	L800 X H180/100 X D300
CTS800180100475	L800 X H180/100 X D475
CTS1000180100300	L1000 X H180/100 X D300
CTS1000180100475	L1000 X H180/100 X D475
CTS1200180100300	L1200 X H180/100 X D300
CTS1200180100475	L1200 X H180/100 X D475
CTS1400180100300	L1400 X H180/100 X D300
CTS1400180100475	L1400 X H180/100 X D475
CTS1500180100300	L1500 X H180/100 X D300
CTS1500180100475	L1500 X H180/100 X D475
CTS1600180100300	L1600 X H180/100 X D300
CTS1600180100475	L1600 X H180/100 X D475
CTS1800180180300	L1800 X H180/180 X D300
CTS1800180100475	L1800 X H180/100 X D475
CTS2000180100300	L2000 X H180/100 X D300
CTS2000180100475	L2000 X H180/100 X D475

Specialist Locker – Sliding lid

The door opens up and slides inside the locker itself

Advantages include....

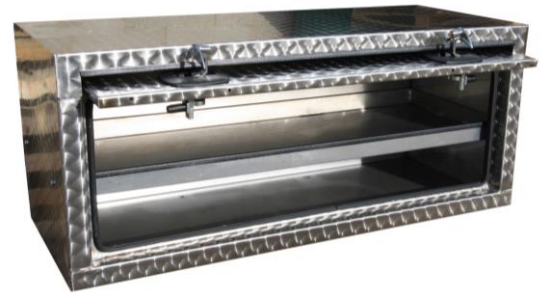
Keeping your operators closer to their vehicles, Easier to remove heavy items from the locker, Doors won't be knocked off, driven into or damaged
Stops pedestrian incidents that can occur with other types of doors, Space saving, Greater HSE aspect – Perfect for the recovery industry!

These lockers come with 2 Vector T2 handle locks along with keys to keep your tools safe and secure, Manufactured in the UK

Available in 1.5mm Flowered stainless & 1.5mm Polished stainless finishes , 304 Grade, Strong, Durable, Weatherproof, Fixed shelf (Flowered version only)

Looking for a cost effective, lightweight locker in this innovative design? Then we have the solution for you – Our aluminium version!

5251 grade, powder coated to protect against the elements, Recyclable, Lightweight, Weatherproof



SKU	DESCRIPTION	SIZE
FFSAA1200500500	Flowered stainless with fixed shelf	L1200 X H500 X D500
PAA1000500500	Polished stainless	L1000 X H500 X D500
AVAA100500500	Aluminium	L1000 X H500 X D500

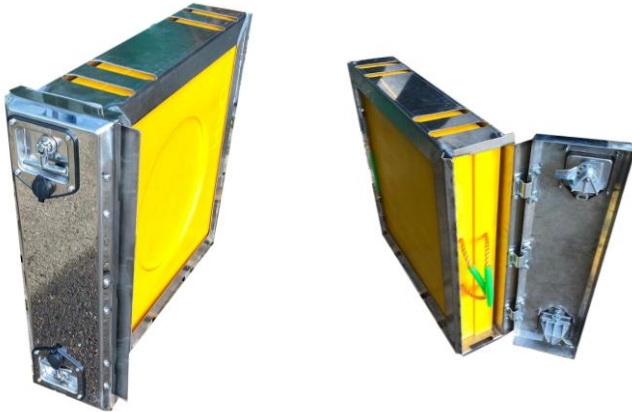
Stainless Crane Pad Holder, Crane Outrigger Pad Stowage Holster

Polished stainless finish body with superbright mirrored stainless door,
304 Grade, Made in the UK

Vector T2 handle locks with keys

Providing straightforward and secure transportation of your outrigger pads
from site to site.

The holster has capacity to store two pads and can be bolted down to a
vehicle, platform, or crane for safe and secure storage.



SKU	SIZE	LOCKS
MCPH40040040	Holds x2 - 400X400X40 pads	2
MCPH60060060	Holds x2 - 600X600X60 pads	2
MCPH1000100060	Holds x2 - 1000X1000X60 pads	2

Retro cab Lockers

These Retro cab modules are designed to fit behind the rear cab of many commercial vehicles including.....

Tippers, Overlanders, 4x4, Pick-ups, Tractor units and many more!

This locker frees up room in the cab and keeps everything dry, safe and secure.

1 door each end of the unit mean you can access the locker with ease, from any side of the vehicle.

Aluminium - 5251 grade

All sizes come with two Vector T2 handle locks and keys in each door

Concealed hinges, Lightweight compared to its stainless counterpart,

Recyclable, Weatherproof, Made in the UK



SKU	SIZE
ADD5007001500	L500 X H700 X D1500 (Door size: L500 X H700)
ADD40012001800	L400 X H1200 X D1800 (Door size: L400 X H1200)
ADD40014501800	L400 X H1450 X D1800 (Door size: L400 X H1450)
ADD5009001900	L500 X H900 X D1900 (Door size: L500 X H900)
ADD50012001900	L500 X H1200 X D1900 (Door size: L500 X H1200)
ADD50014501900	L500 X H1450 X D1900 (Door size: L500 X H1450)
ADD5009002000	L500 X H900 X D2000 (Door size: L500 X H900)
ADD50012002000	L500 X H1200 X D2000 (Door size: L500 X H1200)
ADD50014502000	L500 X H1450 X D2000 (Door size: L500 X H1450)



Double Door Lockers

Would you like your doors to open outwards rather than downwards?

Most of our lockers can be manufactured into the double door option, Simply choose your size and material and contact us for a quote!

This double door locker is one of our most popular and is available in

1.5mm polished stainless &

1.5mm Polished stainless body with 1.5mm mirrored stainless door

Both options come with a fixed shelf and a chequer plate top to match the catwalk,

2 Vector T2 handle locks with keys, 304 Grade, Concealed hinges,

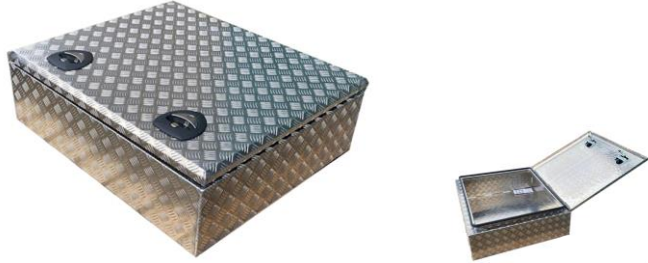
Strong, Durable, Weatherproof, Made in the UK



SKU	DESCRIPTION	SIZE
PDDFS700600600CT	Polished stainless version double door locker, Shelf, Chequer top	L700 X H600 X D600
MDDFS700600600CT	Mirrored stainless double door locker, Shelf, Chequer top	L700 X H600 X D600

Overlander Lockers

Aluminium Chequerplate, 2mm at base / 3.5mm to bars, Vector T2 handle locks with keys, Concealed hinges, Lightweight, Weatherproof, Made in the UK



Overlander roof box

Door is on top for easy access to the locker contents
A great size for any commercial or domestic vehicle

SKU	SIZE	LOCKS
C915290790	L915 X H290 X D790	2

Portable Shower Hot Water Heater Box

A great way to store and use your hot water system
Can be bolted to the rear of canopies, caravans, campervans, Trailers ect...
This locker has over centre fastener locks to maximize the space inside



SKU	SIZE	LOCKS
C500700225OVER	L500 x H700 x D225	2 Fasteners



Campervan / Caravan back box

Leave nothing behind –

This locker is the perfect size for any RV, However if you need something slightly smaller then check out the other standard sizes we have available.

This locker comes with chains to hold the door at a 90'd angle, Not only does this stop the door from hitting the floor it also allows the door to be used as a table or placement area while parked up.

SKU	SIZE	LOCKS
CQ1000500600	L1000 X H600 X D500	2



Overlander Lockers

Aluminium - 5251 grade, powder coated to protect against the elements, Vector T2 handle locks with keys, Concealed hinges, Chains to hold the door open flat allowing the door to be used as a table or placement area when open, Lightweight, Recyclable, Weatherproof

4x4 / Trailer Side lockers

These lockers can be fitted to the back or side of your vehicle giving you additional storage space, perfect for storing your travel essentials.



SKU	SIZE	LOCKS
AVQ1060480120	L1060 X H480 X D120	2
AVQ1200800200	L1200 X H800 X D200	2

Teardrop Trailer locker

Fits nicely on the front of your trailer

Has 2 doors – 1 each end

Keeps your tools and belongings safe & secure



SKU	SIZE	LOCKS
AVDD5007001500	L500 X H700 X D1500 (Door size L500 X H700	4



Van back box

Leave nothing behind –

A great way to store any items that you would like to take with you but didn't have room for before, anything you don't want cluttering up the interior of your van or essential items that you need to get to easily without any hassle..

This particular locker also comes with a fixed shelf.

These lockers will fit a wide range of vehicles including Mercedes, VW, Fiat, Citroen and Peugeot vans.

SKU	SIZE	LOCKS
AVQFS600800350	L600 X H800 X D350	1
AVQFS600800350	L600 X H800 X D450	1



Warrell

www.warrellrichards.com

All trademarks, brands, logos, texts, images and software that appear on this site are, unless otherwise indicated, the property of Warrell Richards Ltd or its subsidiaries, and protected under Intellectual Property Rights laws.

All use of brands, logos, texts, images and software is prohibited, unless permissible already in accordance with the foregoing.

Unauthorized use or distribution of any material from this site may be subject to civil as well as criminal sanctions under the applicable laws. Warrell Richards Ltd will enforce its Intellectual Property Rights to the fullest extent.

Photos, Products and Skus are relevant to when this catalogue was printed and are subject to change – All images are of our actual products, some items may change over time – For example locks, hinges, sizes.